

THE PATRIOT COMMERCE CENTER

862 PATRIOT DR. UNIT E. MOORPARK, CA

INDUSTRIAL CONDOMINIUM

FOR SALE



**LEE &
ASSOCIATES**

COMMERCIAL REAL ESTATE SERVICES

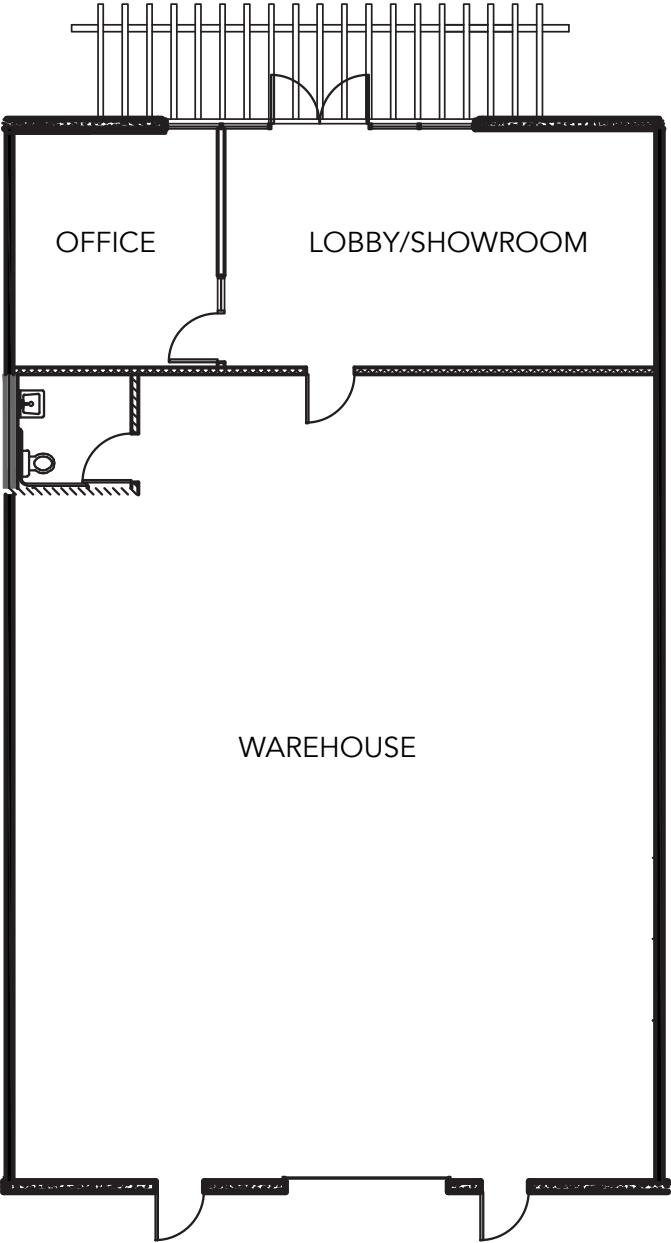
No warranty or representation is made to the accuracy of the foregoing information. Terms of sale or lease and availability are subject to change or withdrawal without notice. CID #01191898

GRANT FULKERSON, SIOR
Principal
818.304.4956
gfulkerson@lee-re.com
www.fulkerson-re.com
License ID # 01483890

MICHAEL TINGUS
President
818.223.4380
mtingus@lee-re.com
www.miketingus.com
License ID # 01013724

No warranty or representation is made to the accuracy of the foregoing information. Terms of sale or lease and availability are subject to change or withdrawal without notice.

PROPERTY HIGHLIGHTS



- Immediate access to 23 & 118 Highways
 - Newer Construction
 - 16 foot clear height
 - Walking distance to numerous retail amenities
 - Moorpark Public Transit stop on-site
 - Business Park anchored by Los Robles Medical Plaza
 - Adjacent to new office/medical development
-
- TOTAL SF 2,394
 - OFFICE SF 620
 - CLEAR HEIGHT 16 Feet
 - POWER 100 Amps
 - PARKING STALLS 5
 - LOADING 1 GL
 - PURCHASE PRICE \$921,690 (\$385 PSF)

AMENITIES





LEE & ASSOCIATES
COMMERCIAL REAL ESTATE SERVICES
No warranty or representation is made to the accuracy of the foregoing information. Terms of sale or lease and availability are subject to change or withdrawal without notice. CID #01191898

GRANT FULKERSON, SIOR
Principal
818.304.4956
gfulkerson@lee-re.com
www.fulkerson-re.com
License ID # 01483890

MICHAEL TINGUS
President
818.223.4380
mtingus@lee-re.com
www.miketingus.com
License ID # 01013724

No warranty or representation is made to the accuracy of the foregoing information. Terms of sale or lease and availability are subject to change or withdrawal without notice.