

AVAILABLE FOR SALE

PAVED/SECURED LOT - M1 ZONING

14611 Arminta St, Panorama City, CA



JARED SMITS
PRINCIPAL
818.444.4986
jsmits@lee-re.com
License ID #01839532

MIKE TINGUS
PRINCIPAL
818.223.4380
mtingus@lee-re.com
License ID #01013724



PROPERTY INFORMATION

Sale Price: \$1,049,000

Land Size: 7,497 SF (0.17 Acres)

Occupancy: Vacant

Year Built 1955

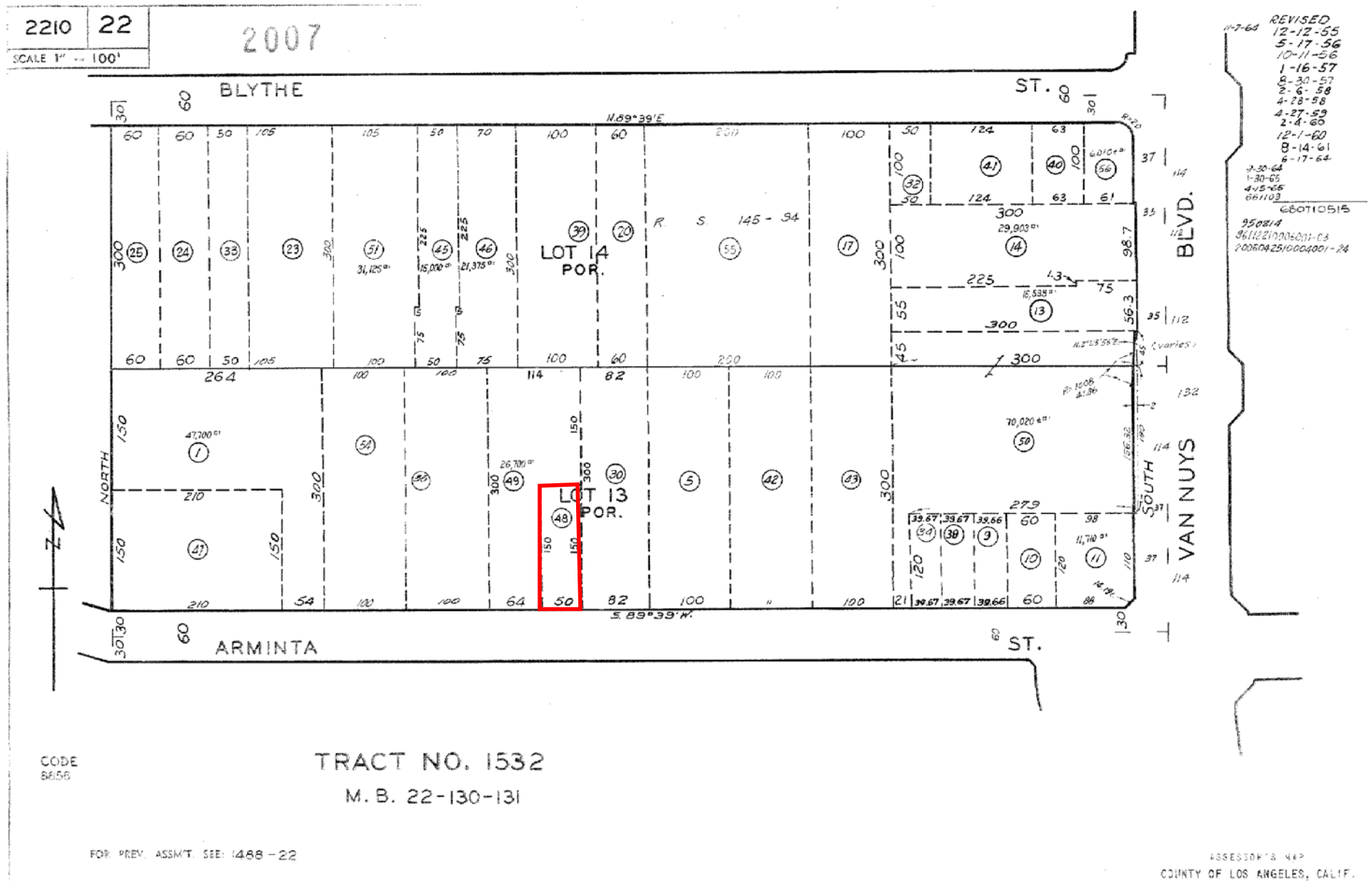
Zoning: M1

APN: 2210-0-022-048

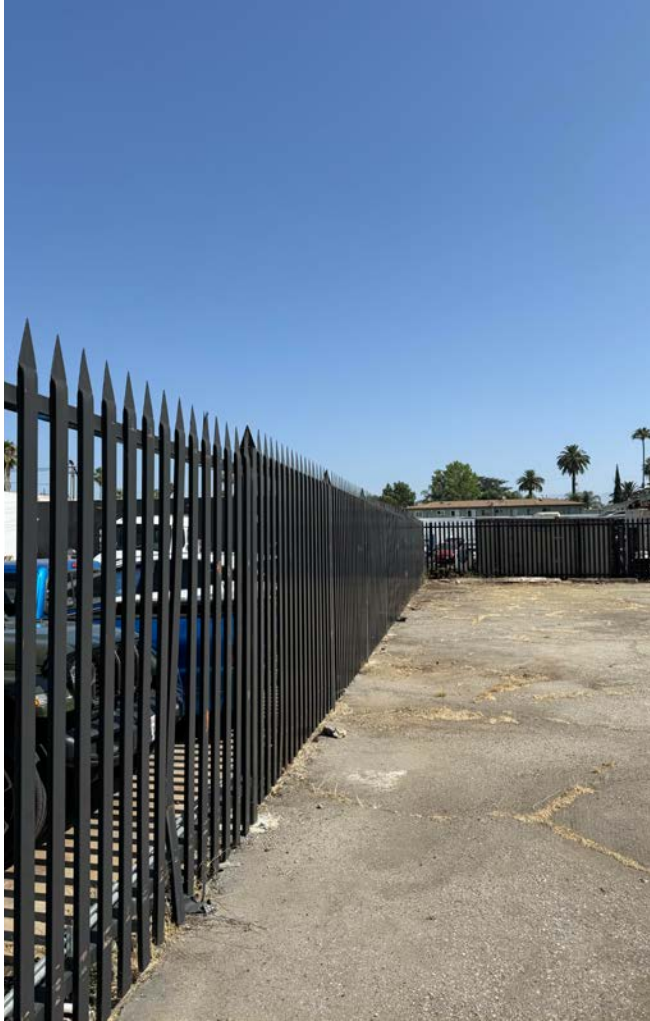
PROPERTY HIGHLIGHTS

- Extremely Rare Paved Lot in the Heart of the San Fernando Valley
- Property is Located in the State Enterprise Zone
- Located Just Off Van Nuys Blvd
- Ideal for Industrial, Retail, Truck Yard, Landscape Yard, Storage and Cannabis Uses
- Walkable to Dozens of Retail Amenities
- M1 Zoning is Very Flexible

SITE PLAN



EXTERIOR PHOTOS



PAVED/SECURED LOT - M1 ZONING

14611 Arminta Street • Panorama City, CA

