

1620 EMERSON AVENUE

FOR LEASE

Oxnard, CA 93033

GRANT FULKERSON, SIOR
Principal
818.304.4956
gfulkerson@lee-re.com
www.fulkerson-re.com
DRE# 01483890

MICHAEL TINGUS
Principal
818.223.4380
mtingus@lee-re.com
www.miketingus.com
DRE# 01013724

BRYCE KOLB
Associate
818.497.3866
bkolb@lee-re.com
DRE# 02240862



LEE & ASSOCIATES
COMMERCIAL REAL ESTATE SERVICES



LOADING:
(2) DH/ (2) GL



OPPORTUNITY
ZONE



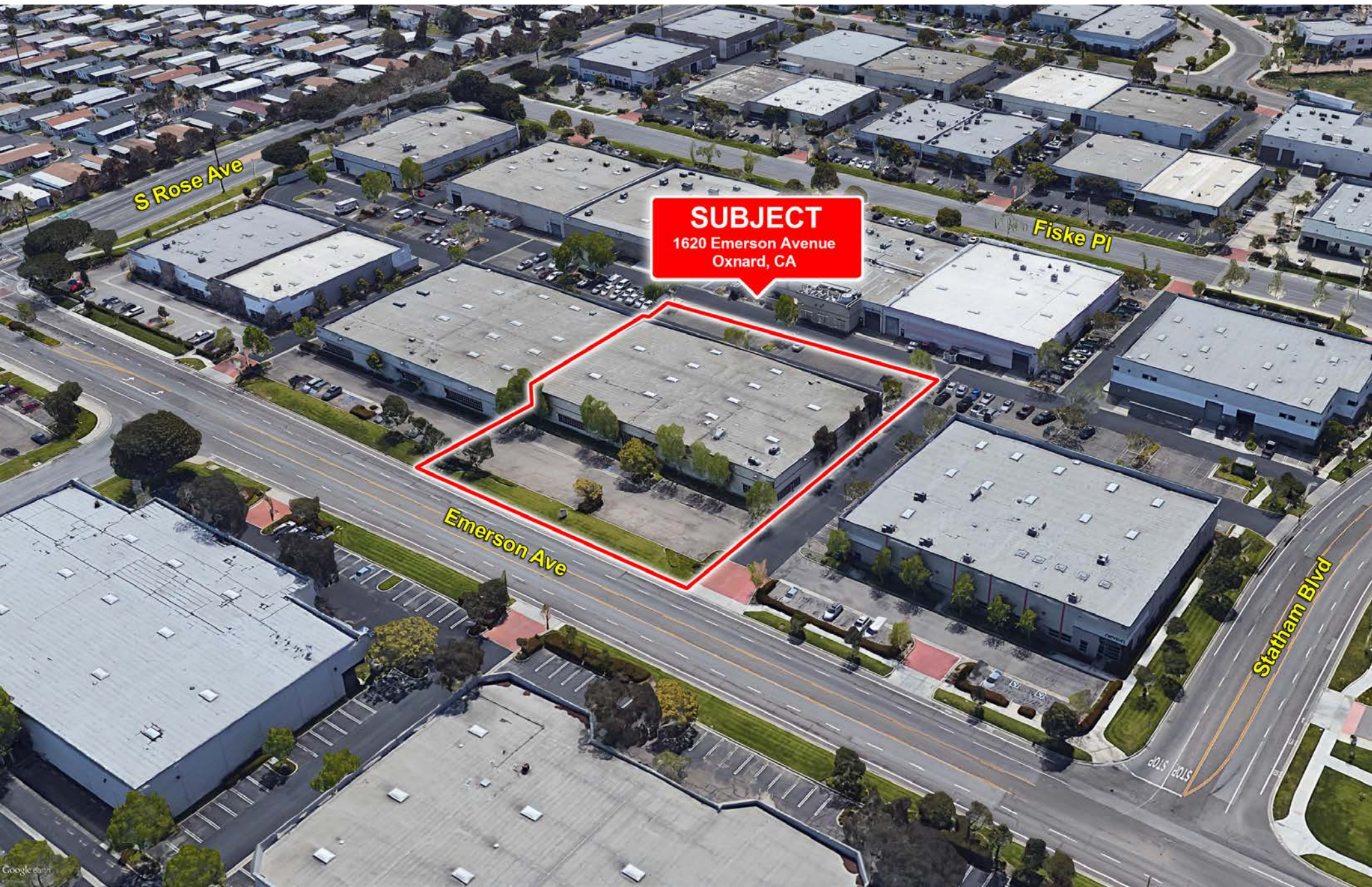
OUTSTANDING
LOADING



LOW NNN
EXPENSES



FREE STANDING
BUILDING





SIZE:
26,547 SF



TOTAL OFFICE:
3,982 SF



CLEAR HEIGHT:
±18 FT



POWER:
400A 277/480V

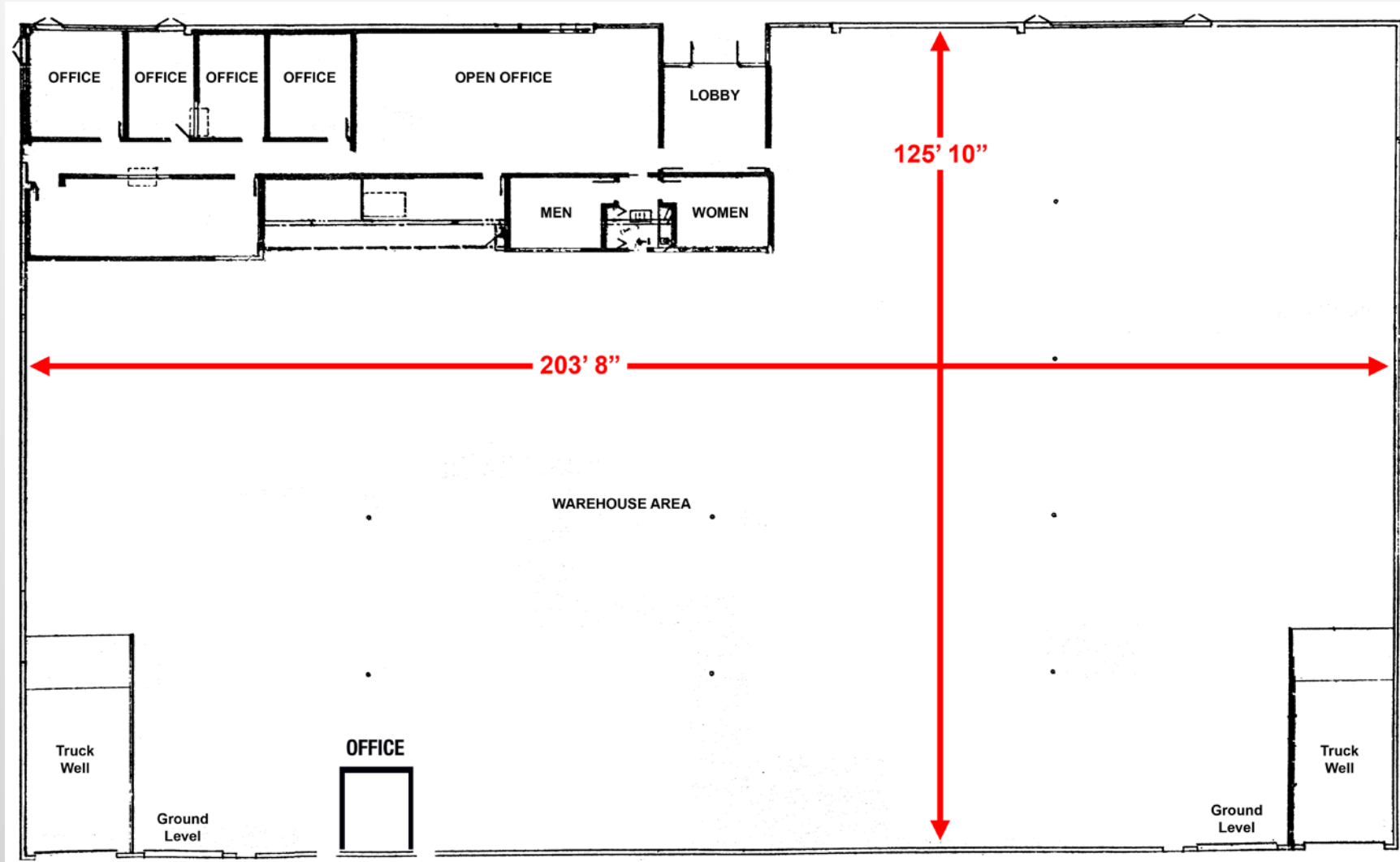


PARKING
STALLS: 70
2.6/1,000



YEAR BUILT:
1986

LEASE RATE: \$0.96 PSF NNN



PROPERTY PHOTOS



PROPERTY PHOTOS







GRANT FULKERSON, SIOR
Principal
818.304.4956
gfulkerson@lee-re.com
www.fulkerson-re.com
DRE# 01483890

MICHAEL TINGUS
Principal
818.223.4380
mtingus@lee-re.com
www.miketingus.com
DRE# 01013724

BRYCE KOLB
Associate
818.497.3866
bkolb@lee-re.com
DRE# 02240862



Pacific Ocean