

PATRIOT PROFESSIONAL PLAZA

Moorpark, California 93021

**FREE-STANDING
PROFESSIONAL & MEDICAL
OFFICE BUILDINGS
FOR SALE OR LEASE**



GRANT FULKERSON, SIOR
Principal
818.304.4956
gfulkerson@lee-re.com
www.fulkerson-re.com
License ID # 01483890

MICHAEL TINGUS
Principal
818.223.4380
mtingus@lee-re.com
www.miketingus.com
License ID # 01013724

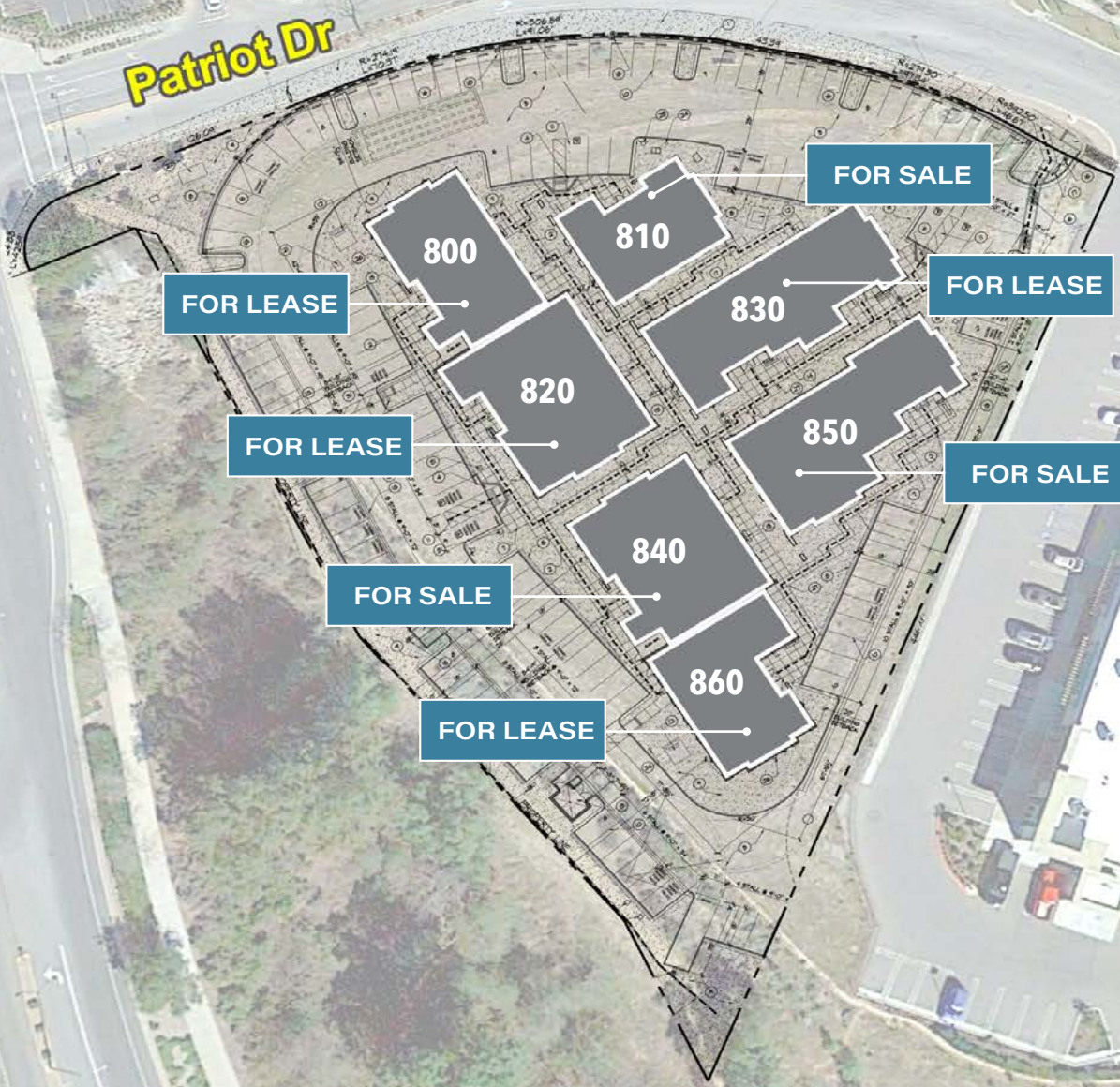
AARON GUERRERO
Principal
818.444.4929
aguerrero@lee-re.com
License ID # 01768375


LEE & ASSOCIATES

A Joint Venture of

**MARTIN TEITELBAUM
CONSTRUCTION INC.**
In collaboration with the Cassar Family

Patriot Dr



FOR SALE

Address	Size	Sale Price	Sale Price (Total)
810 Patriot Drive	2,873 SF	\$695 PSF	\$1,996,735
840 Patriot Drive	4,497 SF	\$695 PSF	\$3,125,412
850 Patriot Drive	4,863 SF	\$695 PSF	\$3,379,785

FOR LEASE

Address	Size	Lease Rate (NNN)	Improvement Allowance
800 Patriot Drive	3,629 SF	\$2.95 PSF	\$75.00 PSF
820 Patriot Drive	4,668 SF	\$2.85 PSF	\$75.00 PSF
830 Patriot Drive	4,965 SF	\$2.85 PSF	\$75.00 PSF
860 Patriot Drive	3,460 SF	\$2.85 PSF	\$75.00 PSF



Walking distance to numerous retail amenities



Immediate Access to 118 & 23 freeways



No common restrooms, lobbies, & corridors



Energy efficient project meeting current code requirements



Neighbors Include:

- Los Robles Hospital Imaging Center
- DaVita Dialysis
- Moorpark Comprehensive Medical Center







PATRIOT PROFESSIONAL PLAZA



MOORPARK • CALIFORNIA

A Joint Venture of



MARTIN TEITELBAUM
CONSTRUCTION INC.

In collaboration with the Cassar Family

No warranty or representation is made to the accuracy of the foregoing information. Terms of sale or lease and availability are subject to change or withdrawal without notice. CID #01191898

PATRIOT PROFESSIONAL PLAZA MOORPARK, CA 93021

GRANT FULKERSON, SIOR

PRINCIPAL
818.304.4956
GFULKERSON@LEE-RE.COM
WWW.FULKERSON-RE.COM
DRE# 01483890

MIKE TINGUS

PRINCIPAL
818.223.4380
MTINGUS@LEE-RE.COM
WWW.MIKETINGUS.COM
DRE# 01013724

AARON GUERRERO

PRINCIPAL
818.444.4929
AGUERRERO@LEE-RE.COM
DRE# 01768375

